

IS-480 – Loading Rates

The following condition must be met before loading rates:

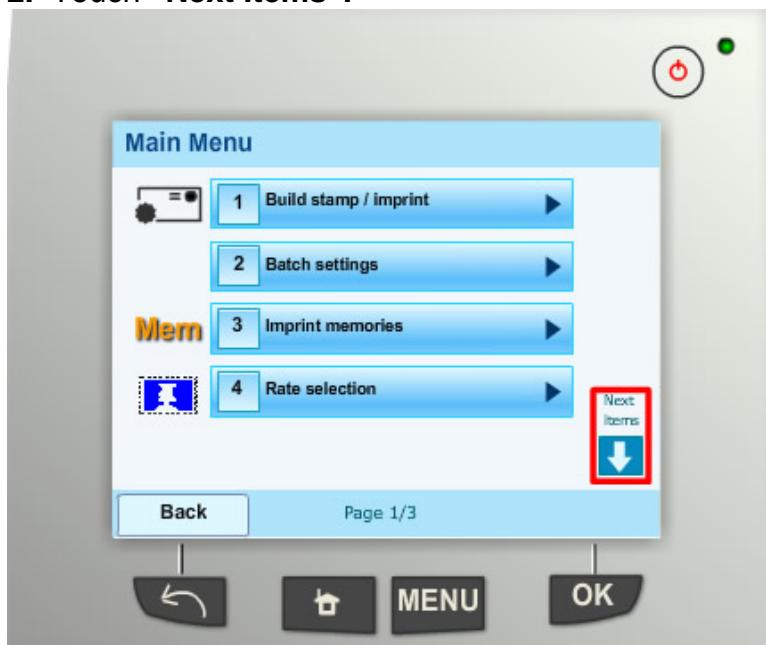
- The customer must have a rate protection plan.
- The machine must be declared.

Loading Rates:

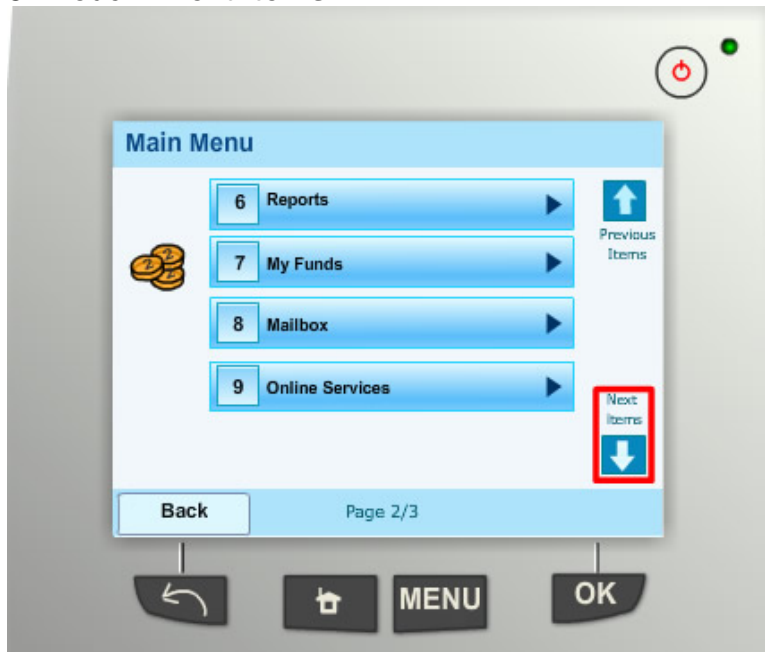
1. Press the “MENU” button.



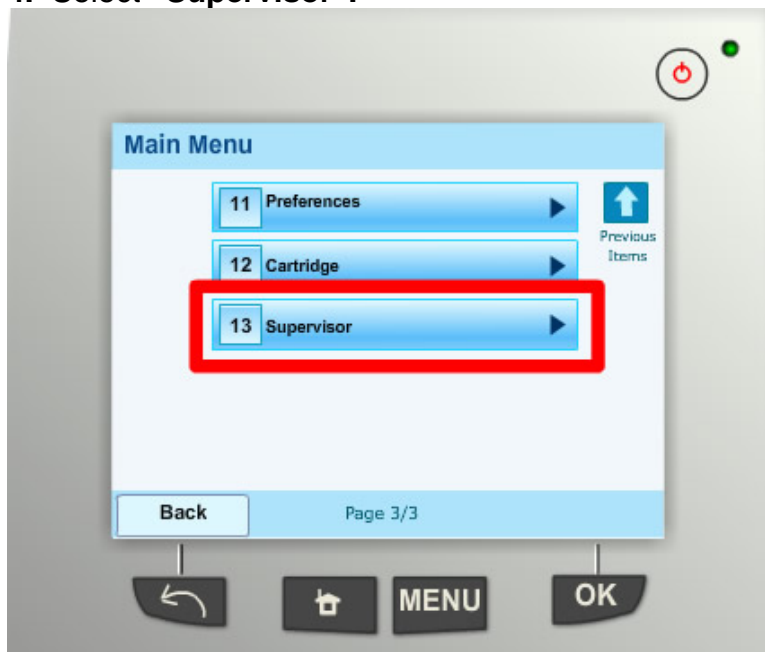
2. Touch “Next Items”.



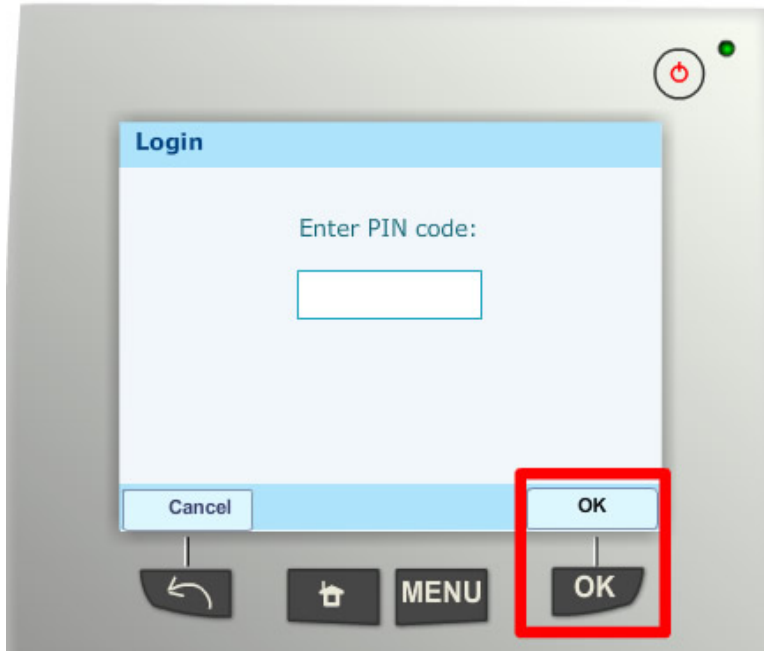
3. Touch “Next Items”.



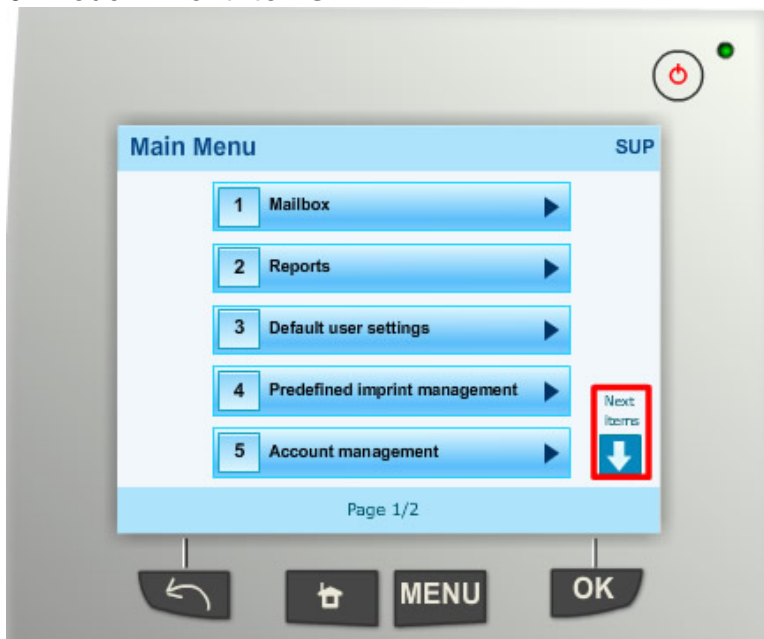
4. Select “Supervisor”.



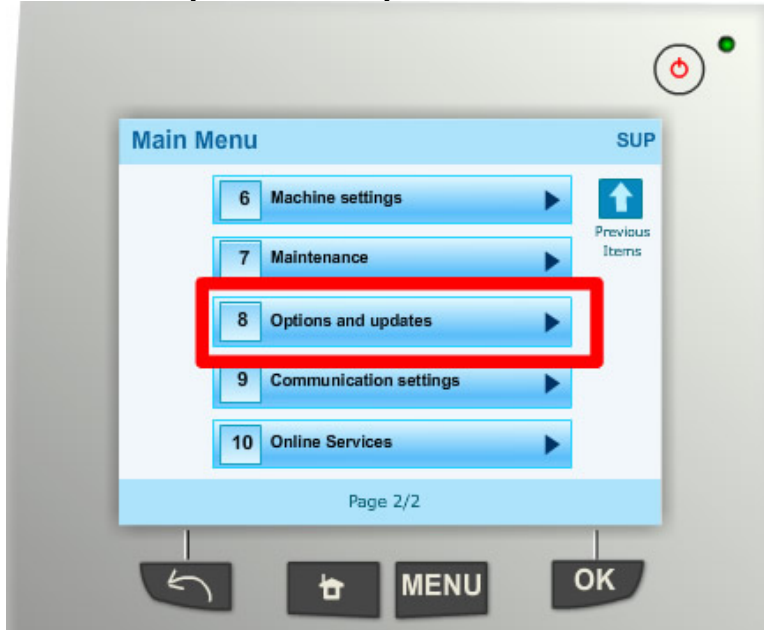
5. Using the numeric keypad, enter the Supervisor PIN Code, “09430”.
- Touch or press “OK”.



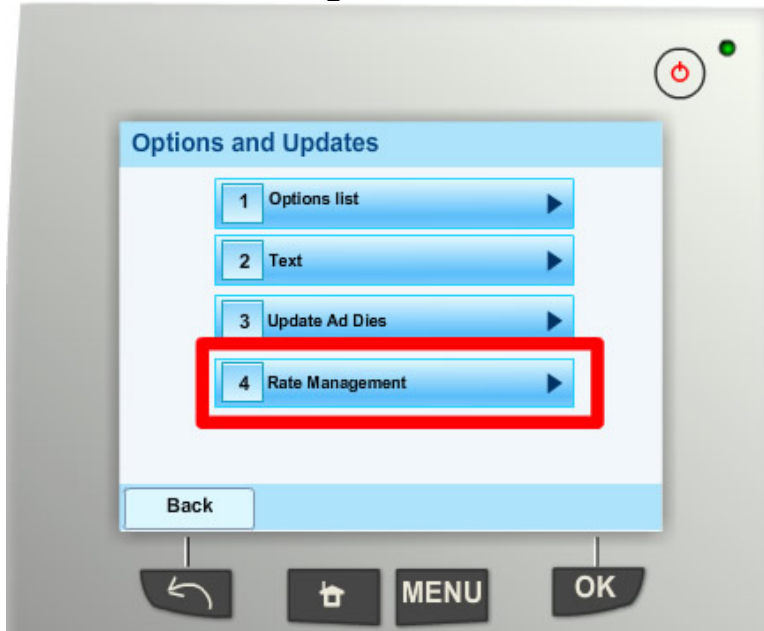
6. Touch “Next Items”.



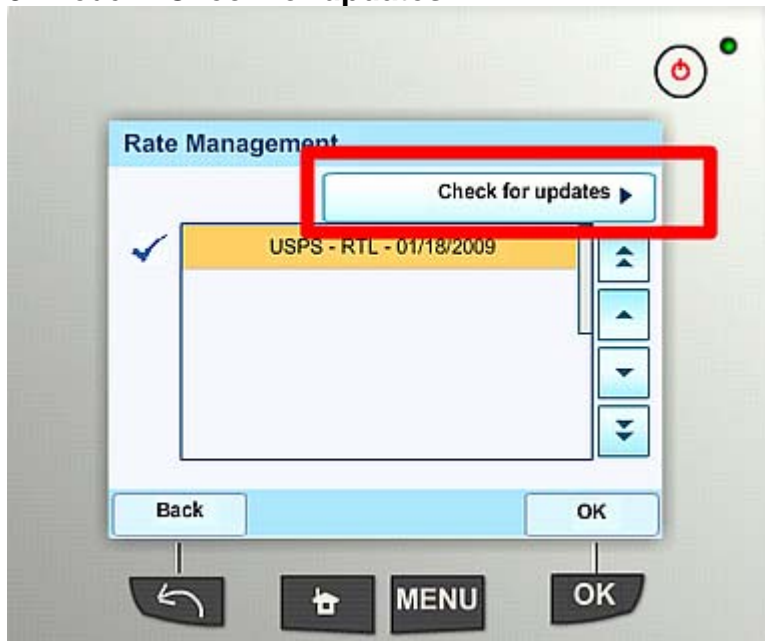
7. Select “Options and Updates”.



8. Select “Rate Management”.



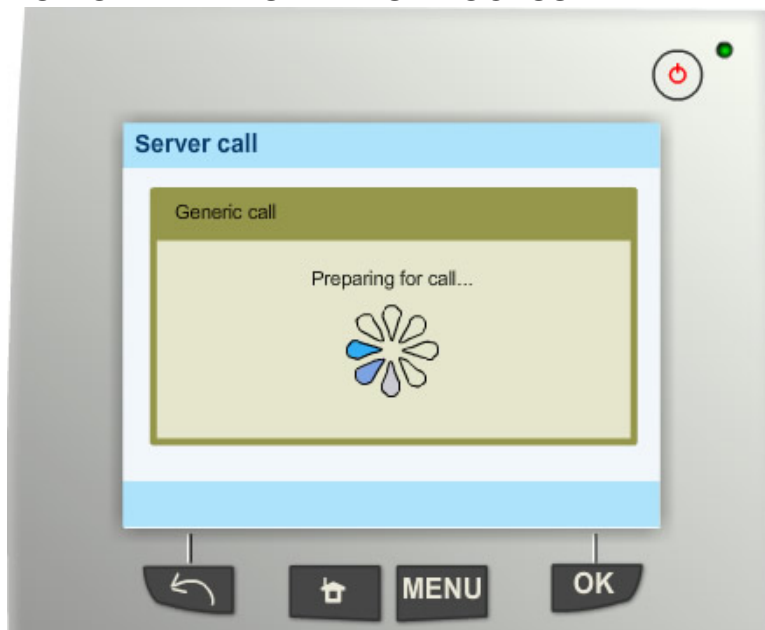
9. Touch “Check for updates”.



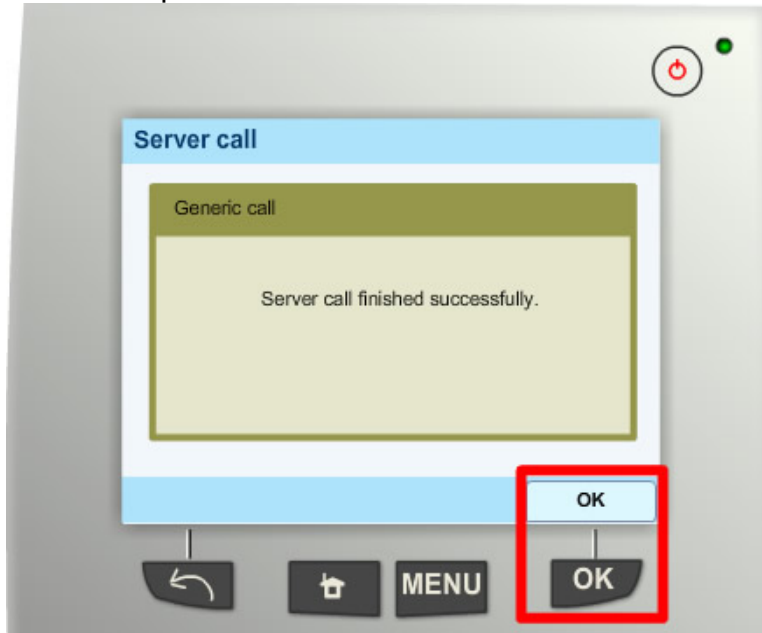
10. The Generic Call consists of:

- Preparing for the call
- Dialing the call
- Transaction in progress

DO NOT INTERRUPT THIS PROCESS.



11. The Generic Call finished and the rates loaded successfully.
- Touch or press “OK”.



12. The current rates are indicated by the check mark.
- The new rates, **USPS – RTL – 05/11/2009**, will become active on the effective date.
- Touch or press “OK” to return to the Homescreen.

