

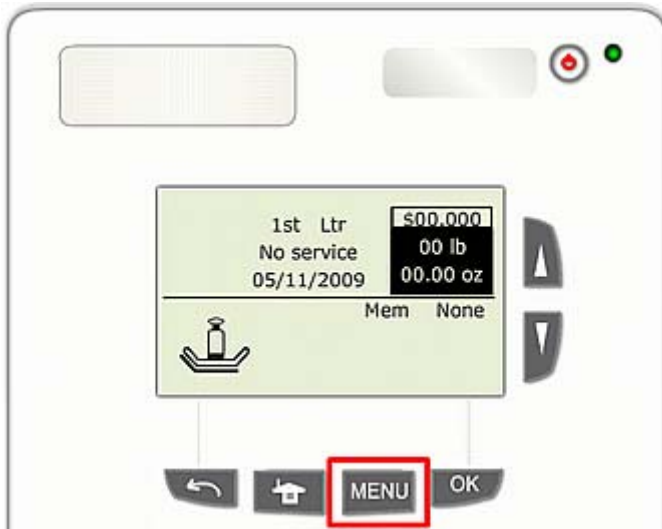
IS-420, IS-440 – Loading Rates

The following conditions must be met before loading rates:

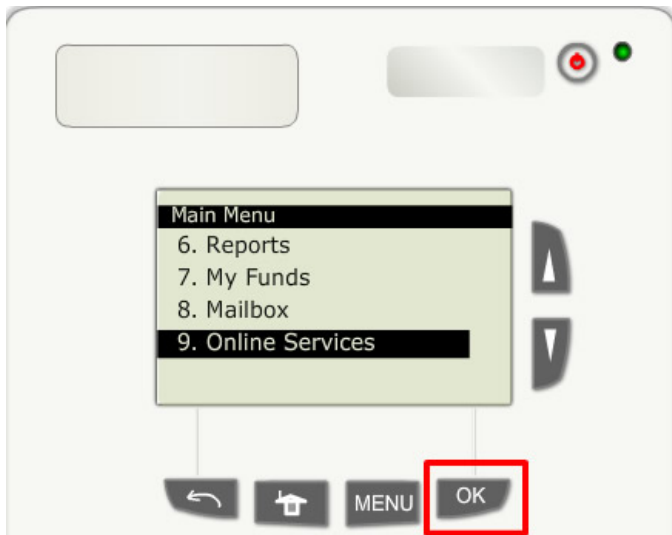
- The customer must have a rate protection contract.
- The machine must be declared.

Loading Rates:

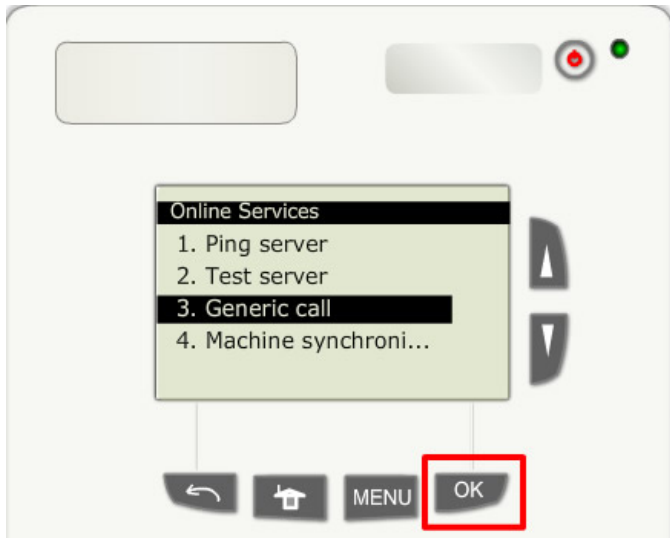
1. Press the “**MENU**” button.



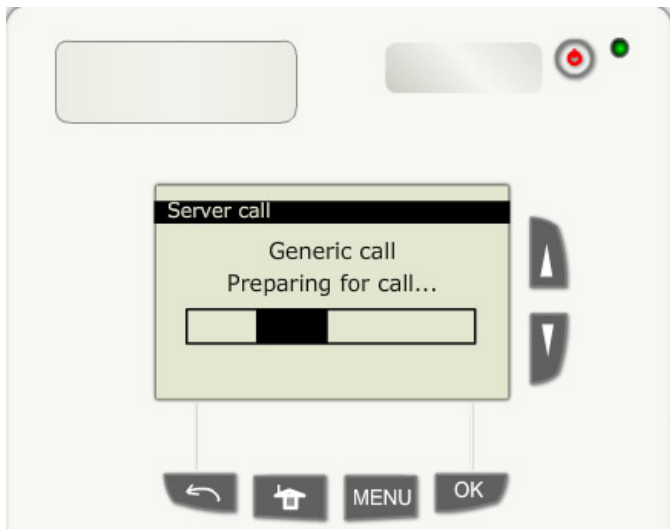
2. Press the down arrow button until “**Online Services**” is highlighted.
- Press the “**OK**” button.



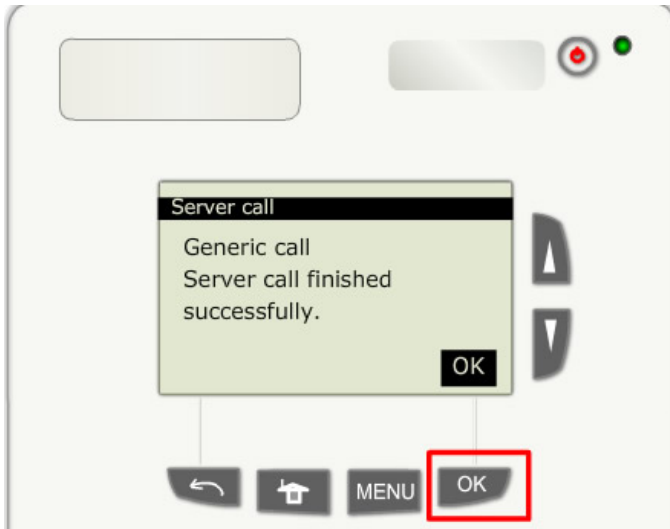
3. Press the down arrow button until **“Generic call”** is highlighted.
- Press the **“OK”** button.



4. The Generic Call consists of:
 - Preparing for the call
 - Dialing the call
 - Transaction in progress**DO NOT INTERRUPT THIS PROCESS.**



5. The Generic Call finished and the rates loaded successfully.
- Press the “**OK**” button.



6. Press the “**BACK**” button several times until the homescreen is displayed.

